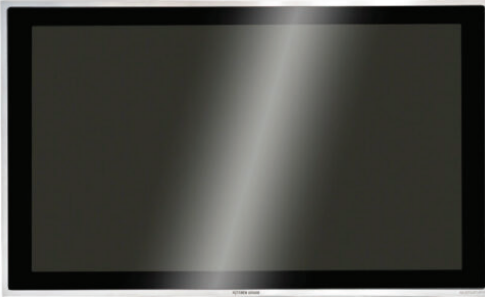


ANDROID POE PCAP TOUCHSCREEN

SKU: KA-22PCAPAI03



## KA-2200 APOE+ 22" ANDROID STAINLESS STEEL POE+ WITH TOUCH

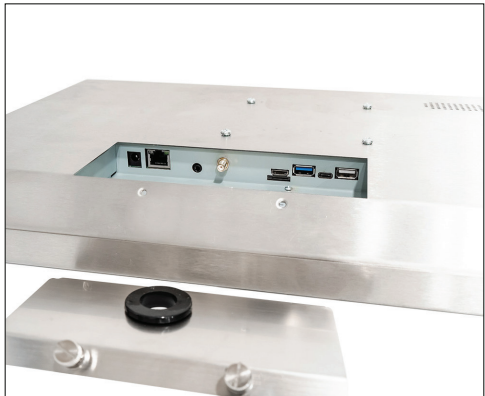
Designed to handle the harsh environment of a restaurant kitchen, the KA-2200 APOE+ can dramatically improve sustainable kitchen operations.



### Product Description

This commercial grade appliance reduces the expense and complexity of installing kitchen systems all while improving station performance, efficiency, staff effectiveness and sanitary & safety requirements.

The 22" PCAP touch screen, along with its surface real-estate, provides flexibility to customize screen design and functionality for enhancing performance. Thus, reducing touches and improving ticket times.



Power over ethernet (POE) eliminates the need and expense of electrical outlets at each station, as well as, power supplies and cable management requirements that typically accompany other KDS hardware solutions. This will reduce points of failure, which then makes it easy to trouble shoot and provides the ability to easily support & service.

It's commercial grade stainless-steel enclosure and hardened glass helps meet HACCP standards in your kitchen environment, as well as extending your product life and investment value.

Warranty Information: All Kitchen Armor Screens come with an automatic one year warranty upon purchase. Contact us for details on warranty.

### Features

- Ergonomically Designed
- Commercial Grade Stainless-Steel
- Commercial Grade PCAP Touch Screen
- Power over Ethernet (POE+)
- Android Operating System

### Benefits

- Easy to clean and sterilize
- Extended product life
- Reduce Failures
- Reduce installation & support cost
- Excellent optical performance
- Improved station performance
- 1 Year warranty

# KA-2200 APOE+ 22" ANDROID STAINLESS STEEL POE+

Item	Specifications
Model	KA-22PCAPAI03
Enclosure / Finish	304 Stainless Steel / No. 4 Brushed
Touch Technology	PCAP
Dimensions	20.83" x 12.6" x 1.94" / 529 mm x 320 mm x 49.2 mm
Active Display Area	18.77" x 10.56" / 476.64 mm x 268.11 mm
Diagonal, Aspect Ratio	21.5", 16:9
Mounting Options	100 mm VESA mount
Color Depth	16.7 million
Resolution	Native: 1920x1080 at 60Hz
Pixel Pitch	0.24825 mm x 0.24825 mm
Contrast Ratio, Brightness (TYP)	3000:1, 250 nits
Response Time (TYP)	18 msec
Viewing Angle (TYP)	Horizontal: 89° or 178° total; Vertical: 89° or 178° total
Touch Capacity, Accuracy	10-touch, 2 mm
Touch Response Time	10 msec
Minimum Touch Body	Ø7 mm
Touch Activation Force	10 g
Touch Resolution	4096x4096
Input Method	Finger, Touch Pen, Gloved Hand
Touch Screen Material	3.0 mm strengthen glass
Surface Durability	Mohs' 7H
Weight	16.3 lbs / 7.39 kgs
Packing Weight	20 lbs / 9.07 kgs
Packing Dimensions	25.5" x 18" x 7" / 647.7 mm x 457.2 mm x 177.8 mm
Light Transmission	86%
CPU	Rockchip RK 3399, 2.0GHz, dual core Cortex-A72 + quad core Cortex-A53
Flash	32G
RAM	4G
OS	Android 7.1.2
WIFI	2.4GHZ/5GHZ
Bluetooth	4.1
LAN	Ethernet 1xRJ45 (1000/100/10 Mbps)
Power Supply	POE+/External 12V DC Power Adapter
POE+ Power Requirements	Switch must meet 802.3at (POE+) 30 Watts, Minimum Cat 5e Cable, 24ga
Lighted Power Switch	Power with LED light: Blue Light
Speaker	3 Watts
Temperature	Operating: 0°C to 40°C (32°F to 104°F); Storage: -20°C to 60°C (-4°F to 140°F)
Humidity	Operating: 20% to 80%; Storage: 10% to 90%
IP Rating	IP 65 Front Side, IP 67 Industrial RJ45 Jack available (POE Only)
MTBF	50,000 hours/50,000,000 touches
Certification	CE, FCC
Warranty	1 year, extendable up to 3 years